

# Nokia IP Security Solutions

Nokia IP60  
Wired and Wireless



# Nokia for Business

Remote Office / Branch Office (ROBO) user access to corporate resources at any time and from any location is now an expected practice for today's enterprise. Securing ROBO users, however, is another challenge for IT administrators. ROBO users with access to the internet could provide a backdoor entry to the corporate network and present new security risks.

## Wired and Wireless Nokia IP60 Security Platforms

Nokia IP60 platforms (both wired and wireless) provide enterprises with all-in-one security for their remote sites. By delivering Check Point firewall, VPN, intrusion prevention, and antivirus technologies in a single solution, Nokia IP60 platforms help ensure remote sites stay as dependable as the corporate site. To simplify security management for large remote site deployments, Nokia IP60 platforms can be centrally managed alongside other Nokia security solutions.

Wireless Nokia IP60 platforms support multiple security protocols, including 802.1x, IPSec over wireless LAN (WLAN), RADIUS, WPA2, and WEP authentication. They also

have dedicated WLAN interfaces from which administrators can set specific security rules for WLAN segments. This protects wireless interfaces by granting access only to authorized users, preventing hackers from attacking corporate resources and applications.

## Reliable Security for the Network Edge

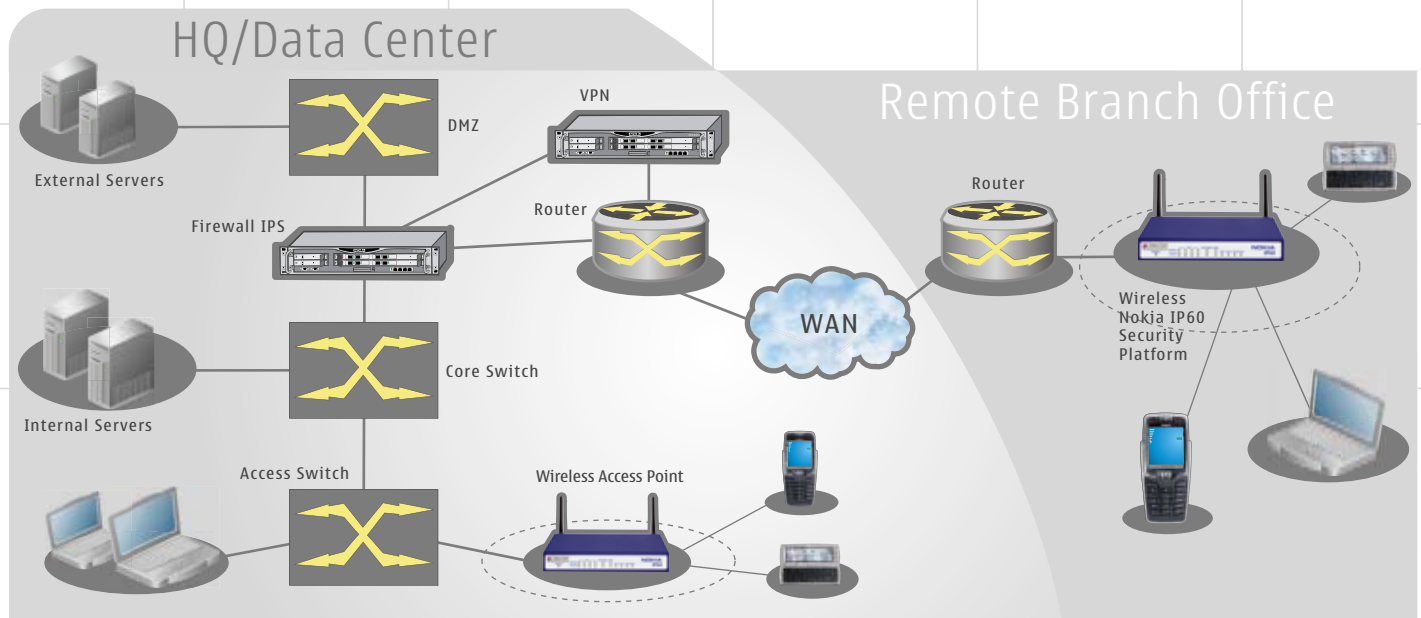
To prevent remote offices from becoming security's weak links, Nokia IP60 Security Platforms provide the same level of firewall, intrusion prevention, and antivirus protection relied on at the main campus. They protect popular Internet services with patented Check Point Stateful Inspection and Application Intelligence technologies. They support more than 150 predefined applications, services, and protocols out of the box, including Web applications, Instant Messaging, peer-to-peer applications, Voice over IP (VoIP), and multimedia services. To help ensure that remote offices stay protected, Nokia IP60 platforms include port-based authentication. Administrators can require employees to authenticate against a RADIUS server before gaining network access, quarantining them if authentication fails.



## Superior Wireless Performance

In addition to supporting 802.11b and 802.11g technologies, wireless Nokia IP60 Security Platforms can support Atheros Super G and XR (eXtended Range) technologies for WLANs. Providing double the network throughput of 802.11g, Super G enables the wireless network to reach speeds of up to 108 Mbps. Super G also provides faster network performance when users work with bandwidth-intensive applications, such as streaming media and VoIP. XR technology on wireless Nokia IP60 platforms minimizes dead spots and greatly increases the coverage of a wireless network for remote sites, providing connectivity that is more reliable. With XR-enabled clients, the network achieves up to three times the range of a standard access point—up to 300 meters indoors and up to 1 kilometer outdoors.

Nokia IP60 solution is backed by Nokia's world-class, IT-grade support which includes Nokia's first call-final resolution support through a team of solution experts.



**NOKIA**  
Connecting People

# □ Technical Specifications

**Nokia IP60 is available in the following user licenses: 8, 16, 32, and unlimited users**

<p><b>Interfaces</b></p> <ul style="list-style-type: none"> <li>• Four-port 10/100 LAN switch</li> <li>• 10/100 WAN port</li> <li>• 10/100 DMZ/WAN2 port</li> <li>• Serial port</li> </ul> <p><b>Firewall and Security Features</b></p> <ul style="list-style-type: none"> <li>• Performance: 8, 16, 32 users 80 Mbps, Unlimited users 150 Mbps</li> <li>• Concurrent connections: 8000</li> <li>• Check Point Stateful Inspection firewall</li> <li>• Check Point SmartDefense</li> <li>• Check Point Application Intelligence</li> <li>• Port-based and tag-based VLAN support</li> <li>• Denial-of-service (DoS) protection</li> <li>• Anti-spoofing</li> </ul> <p><b>VPN</b></p> <ul style="list-style-type: none"> <li>• Performance (3DES): 8, 16, 32 users 20 Mbps, Unlimited users 30 Mbps</li> <li>• Site-to-site IPSec VPN gateway</li> <li>• Remote access IPSec VPN client</li> <li>• Remote access VPN gateway: 1, 10, 15, and 25 users</li> <li>• Remote access from internal networks</li> <li>• Check Point VPN-1 SecuRemote client licenses</li> <li>• MS, 3DES, DES encryption</li> <li>• IPSec NAT traversal</li> <li>• Hardware random number generator</li> </ul> <p><b>Wireless LAN (for wireless Nokia IP60 only)</b></p> <ul style="list-style-type: none"> <li>• WAN access protocols: DHCP, PPPoE, PPTP, static IP, Telstra</li> <li>• Wireless protocols: Super G 802.11b IEEE 802.11g</li> <li>• Wireless security: MAC WPA- 802.1x, wireless, address WPA, WPA2, PSK, IPSec over filtering, WEP</li> <li>• Wireless range (regular mode): Up to 100 meters indoors/ greater than 300 meters outdoors</li> <li>• Wireless range (extended range mode): Up to 300 meters indoors/greater than 1 kilometer outdoors</li> <li>• Multiple SSIDs</li> <li>• Dual diversity antennas</li> <li>• Wireless multimedia QoS</li> <li>• Hotspot mode</li> </ul> <p><b>Networking</b></p> <ul style="list-style-type: none"> <li>• Static NAT</li> <li>• Hide NAT</li> <li>• DHCP server, client, and relay</li> <li>• Dead Internet Connection Detection</li> <li>• OSPF dynamic routing</li> <li>• Bandwidth management (QoS)</li> </ul>	<p><b>Gateway Antivirus</b></p> <ul style="list-style-type: none"> <li>• Integrated antivirus support</li> <li>• Supported protocols: IMAP, NBT, UDP TCP SMTP, FTP, POP3, defined ports NUR</li> <li>• On-the-fly decompression</li> <li>• Centralized email antivirus: POP3, SMTP</li> </ul> <p><b>High Availability</b></p> <ul style="list-style-type: none"> <li>• Gateway High Availability-ready</li> <li>• Supports backup VPN gateway at another site (MEP)</li> <li>• Supports backup ISP (broadband)</li> <li>• Supports dial backup (requires external modem)</li> <li>• Automatic failover</li> </ul> <p><b>VPN User and Gateway Authentication</b></p> <ul style="list-style-type: none"> <li>• Site-to-site: Check Point internal Certification Authority (Diffie-Hellman 1024-bit PKI) digital certificates</li> <li>• Remote access (to VPN-1 UTM): LDAP, Microsoft Active Directory, RADIUS, RSA SecurID, TACACS, XAUTH</li> <li>• Remote access (to Nokia IP60): Preshared secret or RADIUS</li> <li>• Remote access (to VPN-1 UTM Edge W)</li> <li>• Certificate generation for remote access</li> </ul> <p><b>Centralized Management Support</b></p> <ul style="list-style-type: none"> <li>• Management software: Provider-1, SmartCenter, SmartCenter Pro/Smart LSM, SmartCenter Express, SmartCenter Express Plus, SMP</li> <li>• Software updates: SmartUpdate</li> <li>• Reporting and monitoring: Tracker, Syslog Eventia Monitor, SmartView Reporter, SmartView</li> </ul> <p><b>Local Web-Based Management</b></p> <ul style="list-style-type: none"> <li>• Installation wizard</li> <li>• Firewall wizard</li> <li>• VPN wizard</li> <li>• Local logs</li> <li>• HTTPS remote access</li> </ul> <p><b>Additional Management Options</b></p> <ul style="list-style-type: none"> <li>• Command line interface via SSH</li> <li>• Command line interface via serial port</li> <li>• SNMP support</li> </ul> <p><b>Other Hardware Specifications</b></p> <ul style="list-style-type: none"> <li>• Dimensions: 1.2 H x 8 W x 4.8 L inches (3.0 x 20.3 x 12.2 cm)</li> <li>• Weight: 1.8 lbs (0.82 kg)</li> <li>• Power: 100-240 VAC, 50-60 Hz</li> <li>• Regulatory compliance: FCC Part 15 Class B, CE</li> <li>• Warranty: 1 year (hardware)</li> </ul>
--	---

NI3 065 000 Copyright © 2006 Nokia. All rights reserved. Nokia and Nokia Connecting People are registered trademarks of Nokia Corporation. Other trademarks mentioned are the property of their respective owners. Nokia operates a policy of continuous development. Therefore, we reserve the right to make changes and improvements to any of the products described in this document without prior notice. Check Point, the Check Point logo, VPN-1 and FireWall-1 are trademarks, service marks, or registered trademarks of Check Point Software Technologies Ltd.



## European Customer Enquiry Numbers

France +33 170 708 166      Spain +34 914 140 777  
 Germany +49 692 222 203 68      Sweden +46 856 610 789  
 Italy +39 02 36003652      UK +44 161 601 8908

Email: [ipsecurity.emea@nokia.com](mailto:ipsecurity.emea@nokia.com)  
[www.nokiaforbusiness.com](http://www.nokiaforbusiness.com)